

Saudi Arabia



.22 Box-ID
.22 Boxes of the World

Created and Edited By
Roger E. Huegel

2013



Map and flag from Wikipedia.org

SAUDI ARABIA

INTRODUCTION

.THE .22s OF SAUDI ARABIA

The Kingdom of Saudi Arabia, an independent absolute monarchy occupying most of the Arabian peninsula in the near East. It has a area of 873,000 sq. miles. as of 1973, it has a population of 7.7 million people. Capital is Riyadh. The major industries are crude oil and petroleum byproducts, which provides 85% of their revenue.

All .22s for military or sporting use are imported. It has been reported that a .22 production was ordered and shipped, but seems to never have been placed in production•

THANKS

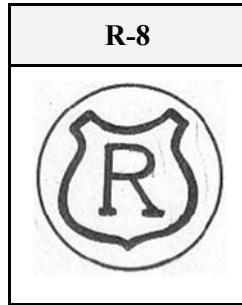
Special thanks to the following collectors for helping me with this project by supplying me with box images and sharing their knowledge. Presented in alphabetical order.

GEORGE KASS

SAUDI ARABIA

HEADSTAMPS (h/s)

Headstamp drawings courtesy of the RIMFIRE HEADSTAMP GUIDE by George Kass and Ron Merchant



MISC. Issues

LR-1

50 CARTRIDGES CAL .22 LONG RIFLE (5,6MMx16) FOR SUBCALIBER CONVERSION KIT G 3	٥٠ طلقة عيار ٢٢ طويل (١٦ x ٥,٦ مم) للبنديقة ج ٣ جهاز ادخال مسطانة - الترياس والخزنة LOT DAG 6/82
---	--

SAUDI ARABIA

MISC. Issues

LR-1 **.22 LONG RIFLE**~"MILITARY". White label with black printing. Large, one-piece box with end flaps. Partial wrap-around label. "R-8" h/s on a nickel washed brass case. Lead bullet. This box was produced on contract by R.W.S. of West Germany during 1982.